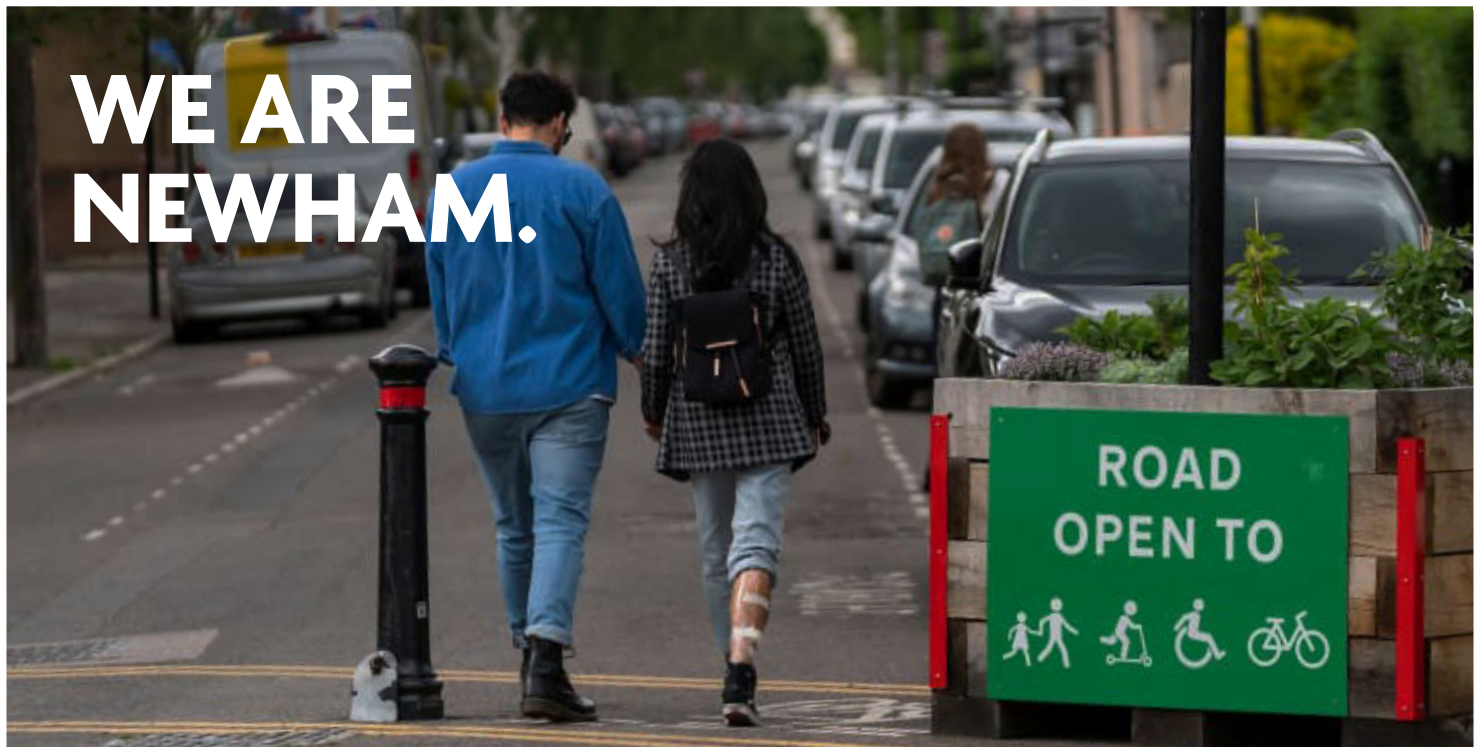


# WE ARE STREETS.



## WOODGRANGE & CAPEL AREA Street Survey results | September 2022

Newham Council is committed to creating more people-friendly streets that make it easier and safer for everyone in Newham to get around using greener modes of transport. Whether you walk, scoot, cycle or use a wheelchair or mobility aids, this will all contribute towards creating a cleaner and healthier borough.

On 24 June 2022, we sent postcards to addresses in the Woodgrange and Capel area asking residents to complete a Street Survey. We received 121 individual responses with residents providing their views about road safety, air quality, walking, cycling and traffic in the area where they live.

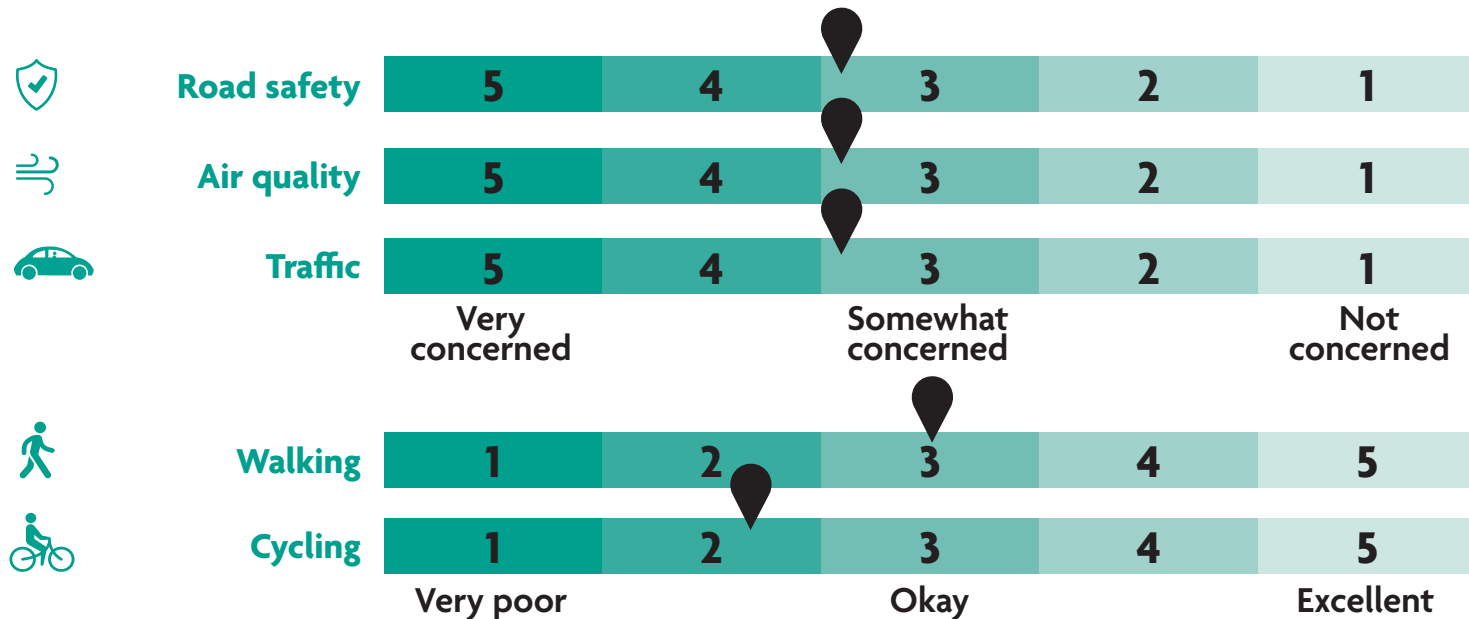
**This leaflet summarises:**

- **Results of the Street Survey**
- **Results of traffic data collection**
- **Plans for a potential new Low Traffic Neighbourhood.**

# Resident survey findings

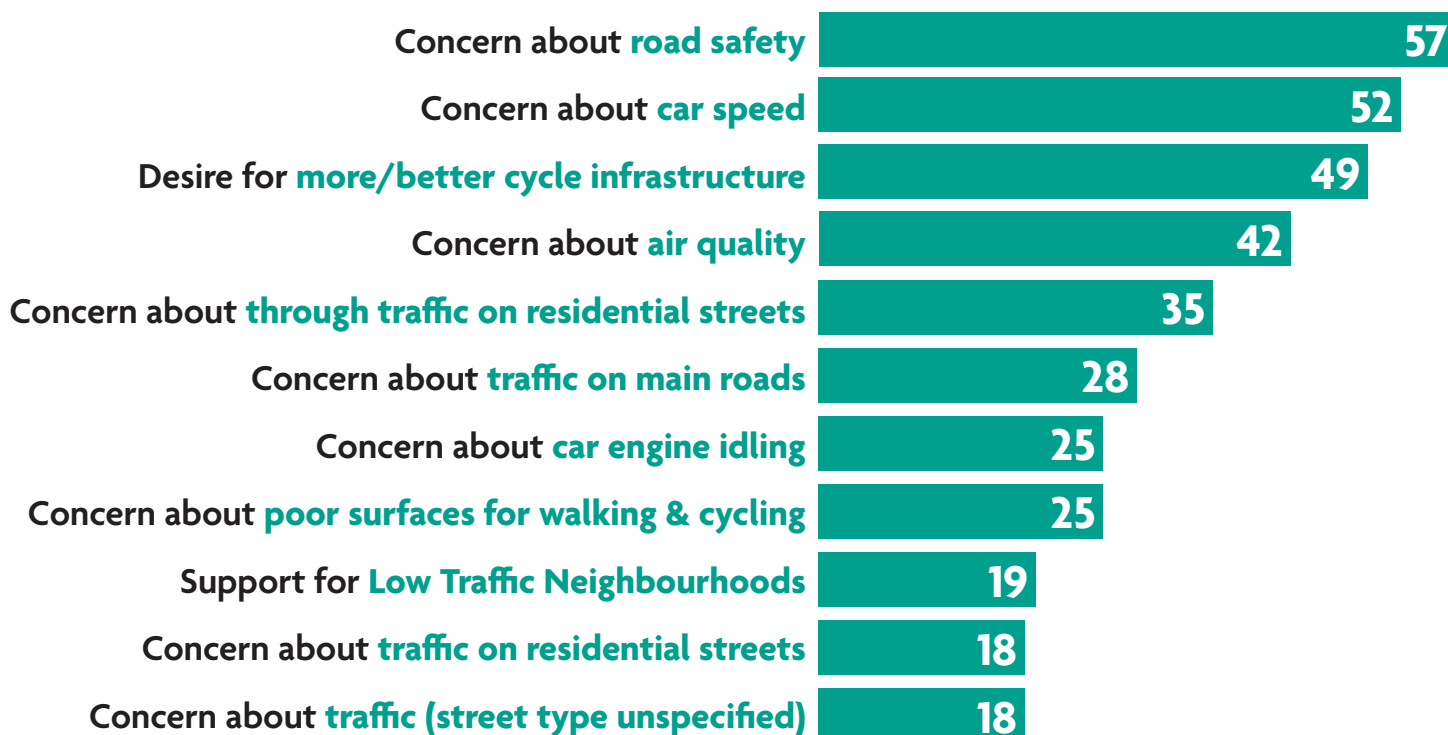
## Average scores

We asked residents to give a score on the current condition of the area regarding five topics. Most residents were 'Concerned' or 'Somewhat concerned' about road safety, air quality and traffic in the area (average score of 3.9 for all above topics). On average, people rated the conditions for walking in their local area 'Okay' (average score of 3.0) and for cycling in their area between 'Very poor' and 'Okay' (average score of 2.6).



## Further comments

People were also given the opportunity to write open text comments on the same topics. The most common comments are summarised below.



# Data collection

A number of traffic surveys were conducted in the Woodgrange and Capel area during one week in April 2022 to gain a comprehensive understanding of the existing traffic. Detailed findings of the traffic survey are shown on the map next page.

## Traffic speed



The Council monitored traffic speeds at 33 locations in the Woodgrange and Capel area.

**At 12 locations, at least a quarter of vehicles were driving at 20mph or faster.** This includes:

- Claremont Road (two locations)
- Osborne Road (two locations)
- Windsor Road (two locations)
- Sebert Road (two locations)
- Tylney Road (one location)
- Whitta Road (one location)
- Hampton Road (one location)
- Durham Road (one location)

The location in the middle of Sebert Road is where the highest percentage of people going at or above 20mph was recorded: 45%.

At only 9 locations, less than 5% of vehicles were driving at 20mph or faster.

## Through traffic



37% of traffic was through traffic, meaning that these vehicles drove through the Woodgrange and Capel area rather than starting or ending their journeys in the neighbourhood.

The following streets had significant volumes of through traffic:

- Balmoral Road,
- Capel Road,
- Sebert Road, and
- Hampton Road

**Two thirds of the locations surveyed within the area carried more than 500 vehicles per day**, equivalent to approximately one vehicle per minute during the busiest periods. It is essential to reduce traffic on these streets for all users, including children, in order to make the neighbourhood feel safe for walking, cycling and playing in the streets.

## Air quality monitoring

We will also be setting up air quality monitoring in line with the concerns expressed by residents, and we will continue monitoring traffic speeds and volumes.

# LONDON BOROUGH OF NEWHAM

## Low Traffic Neighbourhoods

WOOL





# WOODGRANGE & CAPEL AREA

## Exploratory phase



## BASELINE

### Traffic data

#### KEY

- Potential Low Traffic Neighbourhood area

#### Existing

- Green spaces
- Main roads
- Rail
- Overground railway
- Modal filter
- Timed access
- Existing one-way street

#### Traffic volume

- 348** Daily average motorised volume (7-day average, 24h, two-way)
- Estimated busiest route (more than 500 vehicles per day are using the route as through route through the area, on one weekday)
- Percentage of through traffic (vehicles spend less than 5 min in the area)

#### Traffic speed

- Location where 25% or more vehicles are going at or faster than 20mph
- Location where 5-25% of vehicles are going at or faster than 20mph
- Location where less than 5% of vehicles are going at or faster than 20mph

Analysis based on a 7-day 24h motorised vehicle traffic survey (excluding pedal cycles), realised between 21-28 April 2022 (indicative with a +/- 5% error margin)

# Potential new Low Traffic Neighbourhood

Based on the results of the resident survey and traffic data collection, Newham Council is exploring options for implementing an experimental Low Traffic Neighbourhood in the Woodgrange and Capel area.

## Why a Low Traffic Neighbourhood?

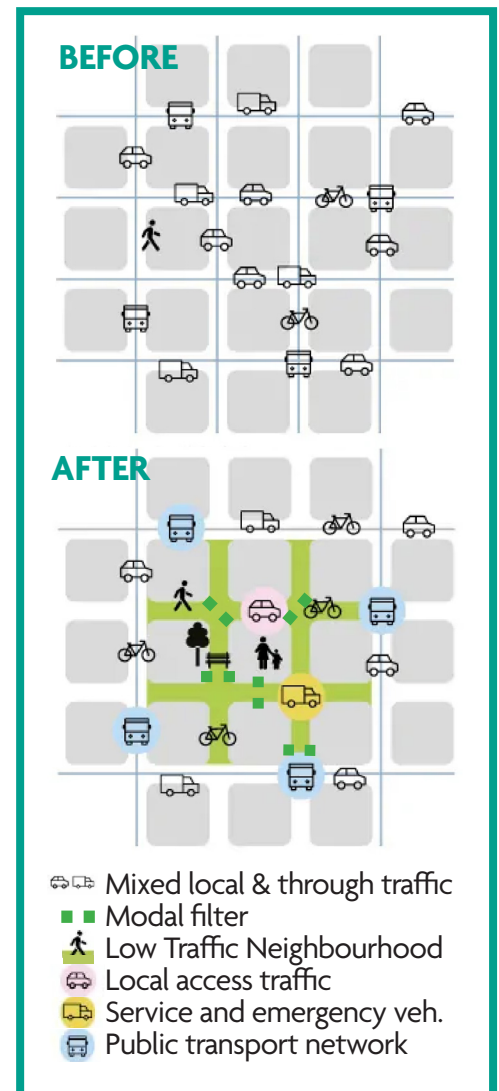
Low Traffic Neighbourhoods are designed to make walking and cycling easier by reducing through traffic. **Benefits typically include improved road safety and community feel, reduced air and noise pollution, and come with improvements to cycling infrastructure and greenery if a Low Traffic Neighbourhood is made permanent.**

## What is a Low Traffic Neighbourhood?

A Low Traffic Neighbourhood is a **predominantly residential area surrounded by main roads in which through traffic is restricted**. Modal filters (see example below) prevent motor vehicles from driving through residential areas, but allow pedestrians, cyclists, wheelchair users, emergency vehicles and waste collection vehicles to pass through (see explanatory diagram opposite).

## Vehicle access to all properties

Motor vehicles can still drive to any property inside a Low Traffic Neighbourhood, but may have to take slightly different route to avoid modal filters.



**Low Traffic Neighbourhood model design principles**



**A temporary modal filter in an experimental Low Traffic Neighbourhood in Newham**



# What happens next?

Areas identified as potential Low Traffic Neighbourhoods go through the stages below.

## 1. Exploratory stage (3-6 months)

The Woodgrange and Capel area is currently at the exploratory stage. The Council is gathering feedback from residents and key stakeholders, and collecting traffic and air quality data. **Based on these early results, we are producing a draft design for an experimental Low Traffic Neighbourhood. We will share this design with residents and seek additional feedback** to help us decide whether or not to implement an experimental scheme.

## 2. Experimental scheme (up to 18 months)

If the Council decides to proceed with an experimental scheme, we will install temporary modal filters. During this stage, we will continue to gather traffic and air quality data to measure the impact of the Low Traffic Neighbourhood. We will also collect feedback from residents, businesses and other groups to help us decide whether or not to make the scheme permanent. Currently there are two permanent and three experimental Low Traffic Neighbourhoods in Newham.

## 3. Permanent scheme

If the Council decides to make the Woodgrange and Capel scheme permanent, we will consider improved design features for the area. This could include:

- Greenery, planting, and landscaping
- Cycle parking and cycle routes
- Pedestrian crossing points, dropped kerbs and improved footways
- Improved modal filter design (see images below)

The Council will continue to monitor traffic and air quality data in order to ensure that the Low Traffic Neighbourhood continues to achieve its objectives.



Examples of permanent modal filters in Waltham Forest

## Additional research

**University of Westminster is conducting research about Low Traffic Neighbourhoods.**

Research survey leaflets will be delivered to addresses in your area. Westminster University may also run quick interviews with residents as they travel on local streets. Whilst the research is independent of Newham Council, the Council fully supports research to improve understanding of Low Traffic Neighbourhoods.

More information on: [shorturl.at/b4568](https://shorturl.at/b4568)



## Let's keep in touch!

### Contact us

If you have any further questions, phone or email us at:



**020 8430 2000**

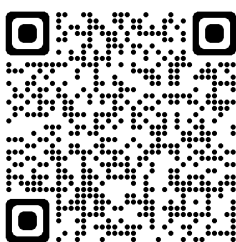


**[liveableneighbourhoods@newham.gov.uk](mailto:liveableneighbourhoods@newham.gov.uk)**

### Further information

For more information, please visit our website using the URL or scan our QR code below.

**[www.newham.gov.uk/transport-streets/low-traffic-neighbourhood](https://www.newham.gov.uk/transport-streets/low-traffic-neighbourhood)**



### Accessible formats

Accessible formats are available on Newham Low Traffic Neighbourhood website, and include:

- PDF
- Plain text (Word)
- Easy Read (simplified text)
- Audio recording
- British sign language summary

### Other languages

For a translation of this document:

- Visit **[shorturl.at/bHKT1](https://shorturl.at/bHKT1)** or scan the QR code below and enter code **1843888**, or
- Call 0203 373 4000

